



KCA Laboratories  
232 North Plaza Drive  
Nicholasville, KY 40356

(633) 522-5227  
https://kcalabs.com  
KDA Lic # P-0058

Certificate of Analysis

1 of 2

## Wedding Cake

Sample ID: 2011KCA0709.2189

Cultivar: N/A

Matrix: Plant

Type: Flower - Cured

Sample Size:

Received: 11/20/2020

Completed: 11/24/2020

Batch#: CBC1001

Client

Hemp Hop LLC

Lic # HP125

2505 Derita Ave #26543

Charlotte, NC 28221



### Summary

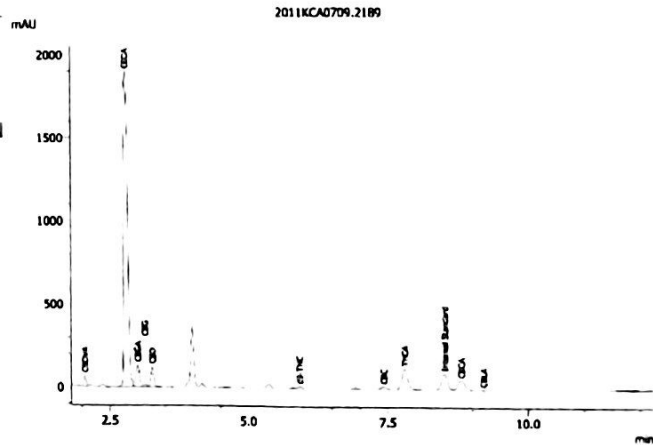
Test	Date Tested	Result
Cannabinoids	11/24/2020	Complete
Moisture	11/24/2020	10.5% - Complete
Terpenes	11/24/2020	Complete

### Cannabinoids by HPLC-PDA

Complete

0.87357%	21.04884%	27.00730%	10.5% Complete	Not Tested
Total THC	Total CBD	Total Cannabinoids	Moisture Content	Foreign Matter

Analyte	LOD	LOQ	Result	Result
	%	%	%	mg/g
CBC	0.00025	0.00240	0.04268	0.4268
CBCA	0.00181	0.00540	1.19357	11.9357
CBCV	0.00060	0.00160	ND	ND
CBD	0.00081	0.00240	0.49868	4.9868
CBDA	0.00043	0.00130	23.43234	234.3234
CBDV	0.00061	0.00160	ND	ND
CBDVA	0.00021	0.00060	0.16332	1.6332
CBG	0.00057	0.00170	0.08175	0.8175
CBGA	0.00049	0.00150	0.59305	5.9305
CBL	0.00112	0.00330	ND	ND
CBLA	0.00124	0.00370	0.01820	0.1820
CBN	0.00056	0.00170	ND	ND
CBNA	0.00060	0.00180	ND	ND
Δ8-THC	0.00104	0.00310	ND	ND
Δ9-THC	0.00076	0.00230	0.08824	0.8824
THCA	0.00034	0.00250	0.89547	8.9547
THCV	0.00069	0.00210	ND	ND
THCVA	0.00062	0.00190	ND	ND
Total THC			0.87357	8.7357
Total CBD			21.04884	210.4884
Total			27.00730	270.0730



Total THC = THCA \* 0.877 + Δ9-THC  
Total CBD = CBDA \* 0.877 + CBD

LOD = Limit of Detection  
LOQ = Limit of Quantitation  
ND = None Detected

For plant material, the reported result is based on a sample weight with the applicable moisture content for that sample.



*Wes Rogers*

Wes Rogers  
Principal Scientist  
11/24/2020



ISO/IEC 17025:2017 Accredited  
Accreditation #108651

This product or substance has been tested by KCA Laboratories using validated testing methodologies and a quality system. Values reported relate only to the product or substance tested. KCA Laboratories makes no claims as to the efficacy, safety or other risks associated with any detected or non-detected amounts of any substances reported herein. This Certificate of Analysis shall not be reproduced except in full, without the written approval of KCA Laboratories.

Wax



# Certificate of Analysis

Powered by Confidential Cannabis  
1 of 4

Sample provided to the laboratory by the client and tested as received.

## Hemp Hop

10843 SE Oak St Suite 100  
Milwaukie, OR 97222  
jordan@hempshop.co  
(980) 474-6129  
Lic. #

Sample: 2005CH0449.1941

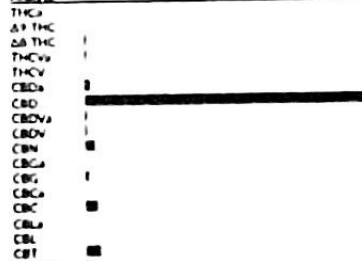
Strain: N/A  
Batch#: Batch Size: g  
Sample Received: 05/28/2020 Report Created: 06/02/2020 Expires: 06/02/2021  
Harvest/Production Date:  
Sampling: Random, Environment: Room Temp

## UB Distillate Wax

Concentrates & Extracts, Distillate, Butane  
Harvest Process Lot: METRIC Batch: METRIC Sample



### Analyte



1 Sample Pass  
w/ing container

## Cannabinoids

675 HPLC (3/2020) (2/2020) (2/2020)  
05/29/2020 METRIC THC BPO Status: Not Tested

**<LOQ**

Δ9-THC/serving

**74.47%**

Total CBD\*\* (Calculated  
Decarboxylated Potential)

**86.96%**

Total Cannabinoids Analyzed

Analyte	Mean	Max
THC <sub>a</sub>	0.8	1.00
Δ9-THC	1.00	1.00
Δ8-THC	1.8	0.18
THC <sub>v</sub>	2.9	0.29
THC <sub>v</sub>	1.00	1.00
CBD <sub>a</sub>	14.4	1.44
CBD	732.1	73.21
CBD <sub>v</sub>	3.2	0.32
CBD <sub>v</sub>	3.8	0.38
CBN	23.8	2.38
CBG <sub>a</sub>	1.00	1.00
CBG	10.0	1.00
CBG <sub>a</sub>	1.00	1.00
CBG	32.9	3.29
CBL <sub>a</sub>	1.00	1.00
CBL	1.00	1.00
CBT	17.2	1.72
Δ10-THC	1.0	0.10
THC	2.4	0.24

**Total CBD<sub>a</sub> CBG<sub>a</sub> BPO: 889.6 86.96**  
\*Total THC = THC<sub>a</sub> + Δ8-THC + Δ9-THC \*\*Total CBD = CBD<sub>a</sub> + Δ11-THC + CBD LOG = Lower of  
Quantity shown, 100 = Not Reported, NG = Not Detected



5471 SE International Way B  
Portland, OR  
(503) 205-5252  
http://hempshop.com  
Lic. # OLEC 010-1002015CASH ORELAP 4057

*Patrick Trujillo*  
Patrick Trujillo  
Technical Director

Confidential Cannabis  
All Rights Reserved  
support@confidentialcannabis.com  
TBAI 506-1866  
www.confidentialcannabis.com



Values reported relate only to the product tested. This laboratory makes no claims as to the consumer safety or other risks associated with any detected or non-detected levels of any pesticides or residual solvents. This Certificate shall not be reprinted, copied or full, without the written approval of Confidential Cannabis. ORELAP accredited (CM4017) and OLEC Licensed Cannabis Testing Laboratory #010-1002015CASH.



12025 NE Marx St. Portland, OR 97220  
 503-253-3511 / www.greenleaflabs.com  
 License#: 10029074C70

**Quality Control Testing  
 Official Report**

*Bokte*

**11/21 CBD ISO**

Sample ID: G9K0518-01 Matrix: Extracts & Concentrates  
 Test ID: 5003920  
 Source ID:  
 Date Sampled: 11/22/19 Date Accepted: 11/22/19

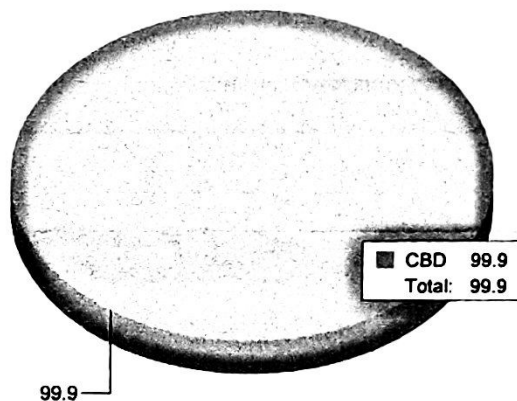
*Farming Solutions, Perfecta Inc.*

**Potency Analysis**

Date/Time Extracted: 11/25/19 11:59 Analysis Method/SOP: 215 Batch Identification: 1948008

Cannabinoids	LOQ (%)	% by Wt.	mg/g
Total THC	0.1577	< LOQ	< LOQ
Total CBD	0.0431	99.95	999.5
THCA	0.0607	< LOQ	< LOQ
delta 9-THC	0.1577	< LOQ	< LOQ
delta 8-THC	0.0934	< LOQ	< LOQ
Exo-THC	0.0217	< LOQ	< LOQ
THCV	0.1052	< LOQ	< LOQ
THCVA	0.0392	< LOQ	< LOQ
CBD	0.0324	99.95	999.5
CBDA	0.0431	< LOQ	< LOQ
CBDV	0.1040	< LOQ	< LOQ
CBDVA	0.0341	< LOQ	< LOQ
CBN	0.0622	< LOQ	< LOQ
CBG	0.0164	< LOQ	< LOQ
CBGA	0.0164	< LOQ	< LOQ
CBC	0.1864	< LOQ	< LOQ
<b>Total Cannabinoids</b>		<b>99.95</b>	<b>999.5</b>

**Cannabinoids Profile**



Total THC = delta 9-THC + (THCA \* 0.877)

Total CBD = CBD + (CBDA \* 0.877)

For Potency only delta 9-THC, THCA, CBD, CBDA are ORELAP accredited analytes.

Water Activity Action Level is 0.65. Results above 0.65 fail state testing requirements and will be highlighted Red.

*Russell Kuhfeld*

Russell Kuhfeld  
 Quality Officer - 11/27/2019

All QC samples met acceptance criteria of the method; data available upon request. These results relate only to the sample included on this report. The report may not be reproduced except in full, without the written permission of Green Leaf Lab. Lab results apply to the sample as received, samples were not collected per OAR 333-007 requirements